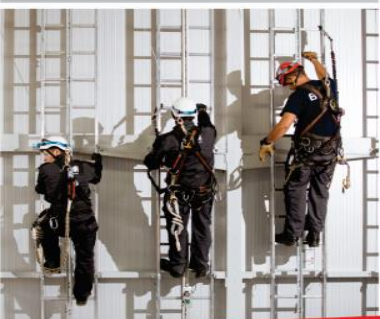




MONSSON GROUP



Romania, 2014

Nature, the only solution!



- Projects development
- Construction management
- EPC contracting
- Assets management
- Technical operation of wind and PV farms
- Service and maintenance of wind turbines and electrical equipment
- Technical operation of medium and high voltage equipment
- Dispatch center
- Consultancy



- Wind power forecasting
- Security and video monitoring
- Communication infrastructure
- Aviation lights for wind turbines
- GWO Training
- Consultancy



- Rotor inspection & repair
- Gearbox inspections
- Vibration measurements
- Special tools for heavy industry
- Spare parts and consumables for industry



- Transport and Installation of wind turbines
- Exchange of WTG capital parts
- Industrial cleaning and protective coating
- Rope access services

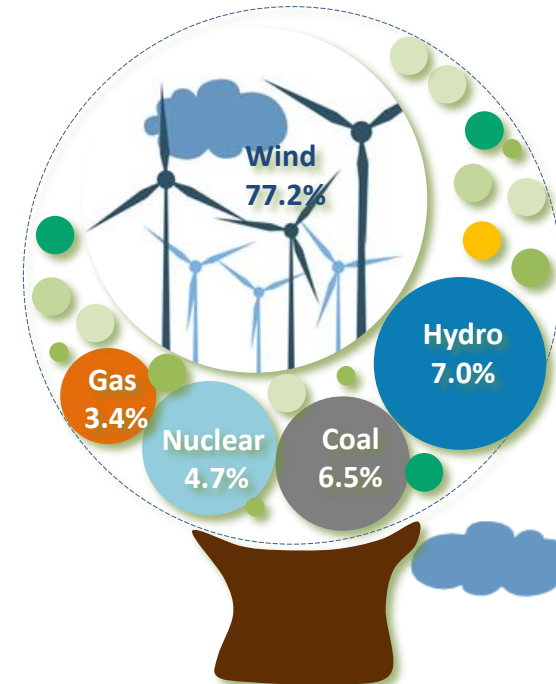


- Electrical EPC contracting
- Electric traction
- SCADA solutions for industry
- Installation / maintenance of transformers and accessories
- Construction/ maintenance of medium and high voltage substation
- Energy storage
- Intelligent metering systems and smart grid
- Virtual power plant
- Consultancy

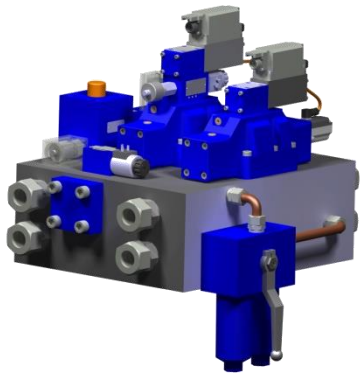


- Electricity trading
- Power Purchase Agreements
- End-user power supply
- Green Certificates Service Agreements
- Portfolio management and optimization
- Consultancy

ANRE - Energy label for 2013



- Operation, service and maintenance of small hydro
- Upgrading and technical assistance of hydraulic actuation
- Design and execution of electrical power and numerical automation of hydropower hydraulic systems
- Consultancy



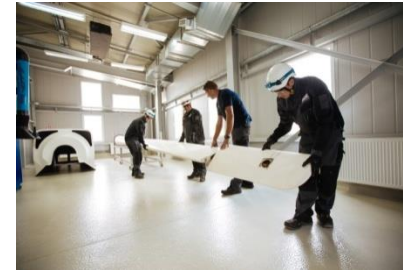
- Water sludge treatment plants
- Waste incineration plants
- Cogeneration plants
- Power generation from residual natural gases
- Research and development



- Waste-to-energy solutions
- Energy storage
- Smart grid solutions for industry
- Virtual power plants



- GWO Training: Wind Turbine Production Technician, WT Onshore Service Technician, WT Offshore Service Technician, WT Onshore Installer, WT Offshore Installer, Rotor blade Technician
- Oil and gas
- Rotor blade repairs





1

- Using the latest technologies in the industry
- GWO Training Center for our technicians
- New car fleet with full range of tools
- Worldwide spread: Europe, Africa, Middle East
- Dispatch Center 24/7
- Research & Development department
- Online client support and staff management software
- Local representatives in each country we do business in
- We first test on our own turbine fleet and then to clients

2010- Fantanele and Cogealac Wind Farm 600MW

- Located in Constanta County
- Largest onshore wind farm in the world outside USA
- Fully operational since November 2012
- Monsson Alma developed the project and was also involved in the construction management
- Short development period of only 2 years
- Turbine produced by General Electric

2013- Pantelimon Wind Farm - 123 MW

- Located in Constanta County
- Developed by Monsson
- In operation since 2013
- Turbines produced by Vestas

2012- Mireasa 1 – 50MW

- Located in Constanta County
- Under construction
- Turbines produced by Goldwind



2014- CHE Racovita, Sibiu

- Customer: Hidroelectrica Sibiu
- Hydropower unit: 2 X $P_i = 16$ MW-
manufacturer U.C.M. Resita
- Collaboration for design of speed digital governors, hydrometry
- Collaboration for digital system for SCADA/
hydropower unit automation, digital
protection and dam automation

2011- CHE Strejesti, Olt

- Customer: Hidroelectrica Rm. Valcea
- Hydropower unit: 2 X $P_i = 16$ MW-
manufacturer U.C.M. Resita
- Collaboration for design of speed digital governors

2012/HA2, 2011/HA1- CHE Robesti, Valcea

- Customer: Hidroelectrica Rm.Valcea
- Hydropower unit: 2 X $P_i = 16$ MW-
manufacturer U.C.M. Resita
- Collaboration for design of speed digital governors, hydrometry
- Collaboration for digital system for SCADA/
hydropower unit automation, digital
protection and dam automation



Traction power substation and tramway catenary lines in Greater Athens, Greece:

- Contract period: 17.02.2003 – 05.08.2004
- Nature of work: design, delivery of materials and maintenance
- Total Contract Value : 16.000.000 €

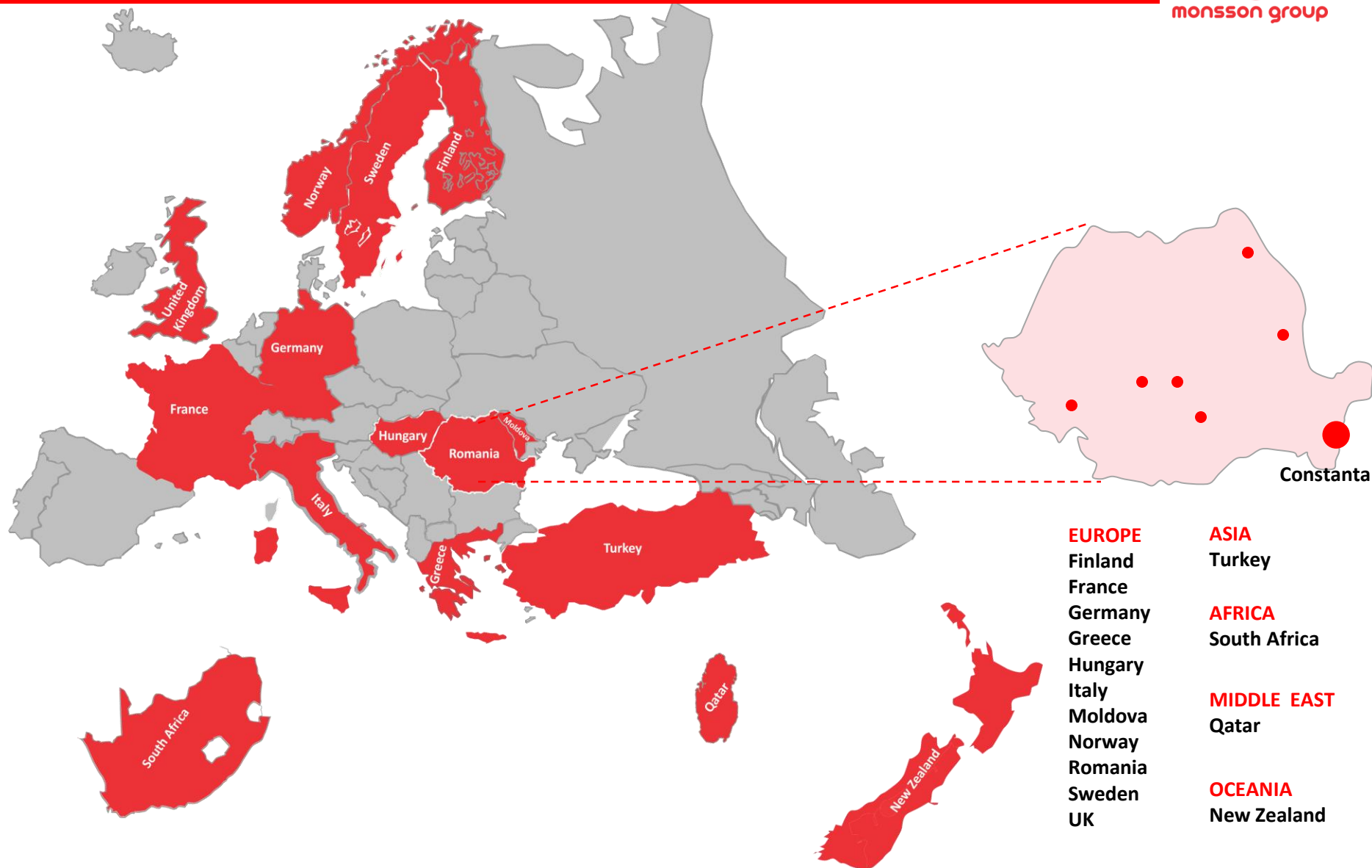


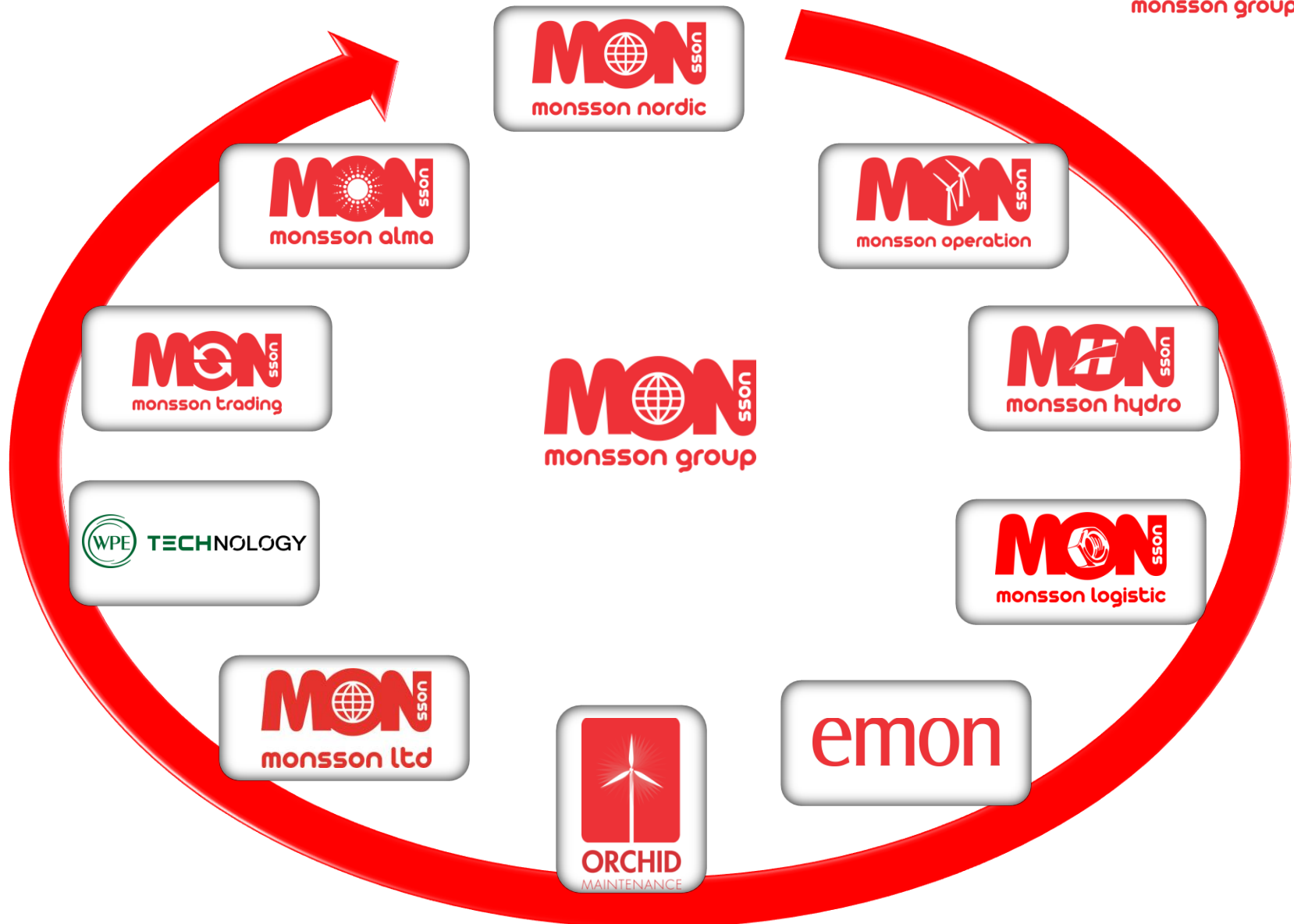
Equipment erection & installation of 400/220kV GIS – Brazi Vest Substation:

- Contract period: 10.07.2009 – 21.02.2011
- Partner: **Toshiba Corporation**



MONSSON GROUP SERVICES MAP







Renewables

Name: Sebastian ENACHE
Mobile: 0751 22 44 06
E-mail: sebastian.enache@monsson.eu

Commercial Department

Name: Alexandru TUNARU
Mobile: 0743 22 44 89
E-mail: alexandru.tunaru@monsson.eu

Energy trading

Name: Raluca RUSU
Mobile: 0751 22 44 19
E-mail: raluca.rusu@monsson.eu

Electrical

Name: Mircea SOLOMON
Mobile: 0722 25 50 32
E-mail: mircea.solomon@emon.ro

Hydropower

Name: Ciprian GOLEA
Mobile: 0725 10 43 47
E-mail: ciprian.golea@monsson.eu

Monsson Group

Headquarters:
480 Tomis Boulevard, 900519, Constanta - Romania
Phone: +40 241 550 353
Fax: +40 241 550 323
E-mail: office@monsson.eu

www.monsson.eu